



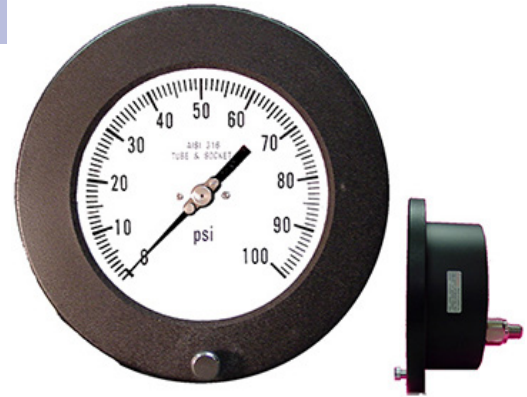
# 4504, 6504 PROCESS GAUGE PANEL MOUNT

Hinged ring panel mount for easy adjustment  
Solid front safety case design

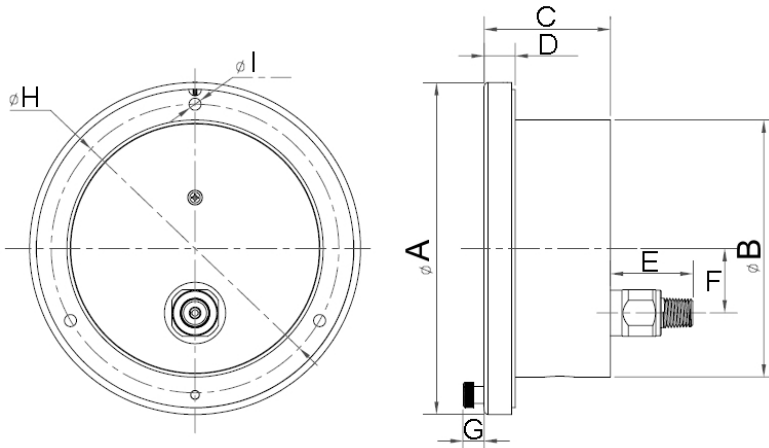
## SPECIFICATIONS

|                     |   |
|---------------------|---|
| <b>Dial</b>         | 4 ½" (114 mm), 6" (150 mm)  |
| <b>Case</b>         | Aluminum case with hinged front flange<br>Solid front/blow out back |
| <b>Wetted Parts</b> | 316 stainless steel   |
| <b>Movement</b>     | With overload/underload stops                                       |
| <b>Bezel</b>        | Removable, black enamel aluminum                                    |
| <b>Lens</b>         | Plastic lens for 4 ½"<br>Glass lens for 6"                          |
| <b>Pointer</b>      | Micro adjustable, black aluminum                                    |
| <b>Connection</b>   | Lower back mount<br>¼" or ½" NPT                                    |
| <b>Scale</b>        | Standard: single scale psi  |
| <b>Accuracy</b>     | 0.5% of span ASME B40.1 Grade 2A                                    |
| <b>Ambient Temp</b> | Dry = -30° F to 180° F  |

*Design meets or exceeds ASME B40.100 pressure gauge standard.*



4



| Dial | Unit | A     | B     | C     | D     | E     | F     | G     | H     | I     |
|------|------|-------|-------|-------|-------|-------|-------|-------|-------|-------|
| 4 ½" | In.  | 6.16" | 4.77" | 2.35" | 0.58" | 1.70" | 1.20" | 0.39" | 5.35" | 0.22" |
|      | mm   | 156.5 | 121.2 | 59.7  | 14.7  | 43.2  | 30.4  | 10    | 136   | 5.7   |
| 6"   | In.  | 7.56" | 4.76" | 2.62" | 0.63" | 1.40" | 1.20" | 0.33" | 7.01" | 0.19" |
|      | mm   | 192   | 121   | 66.5  | 16    | 35.6  | 30.4  | 8.5   | 178   | 4.7   |

## AVAILABLE OPTIONS\*

- Certificate of Accuracy, NIST traceable
- Custom Dial
- 3/15 Receiver Gauge
- Special Connection Size
- Cleaned for Oxygen Service (dry only)
- Knife-edge Pointer
- Max/Min Pointer, see page 120

\*Lead times/minimums may apply

## APPROXIMATE SHIPPING WEIGHTS/ BOX QUANTITIES

| Dial Size | Est. Unit Wt.          | Box Qty      |
|-----------|------------------------|--------------|
| 4 ½"      | 2.36 lbs/<br>(1.07 kg) | 18           |
| 6"        | 3.10 lbs/<br>(1.40 kg) | upon request |

NOTE: Because of continuing improvements, increments/specifications are subject to change without notice. Stock ranges vary by dial size and configuration. Consult PIC Gauges for availability.