

# CONTRACTOR SERIES

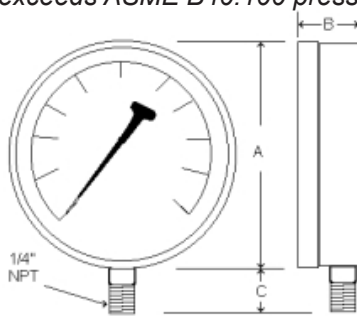
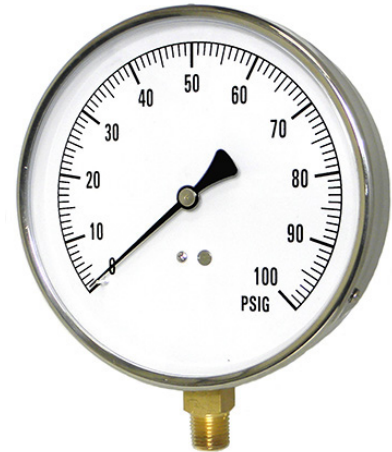


Large, easily readable gauge designed for commercial & industrial use  
 Suitable for air, water, oil, gas or any other media not corrosive to copper alloy

## SPECIFICATIONS

<b>Dial</b>	4 1/2" (114 mm)
<b>Case</b>	Stainless steel, dry non-fillable
<b>Wetted Parts</b>	Copper alloy
<b>Bezel</b>	Removable, stainless steel
<b>Lens</b>	Plastic
<b>Pointer</b>	Adjustable, black aluminum Adjustment screw on dial
<b>Connection</b>	Lower mount 1/4" NPT
<b>Scale</b>	Standard: single scale psi
<b>Accuracy</b>	1% of span ASME B40.1 Grade 1A
<b>Ambient Temp</b>	-30° F to 180° F

Design meets or exceeds ASME B40.100 pressure gauge standard.

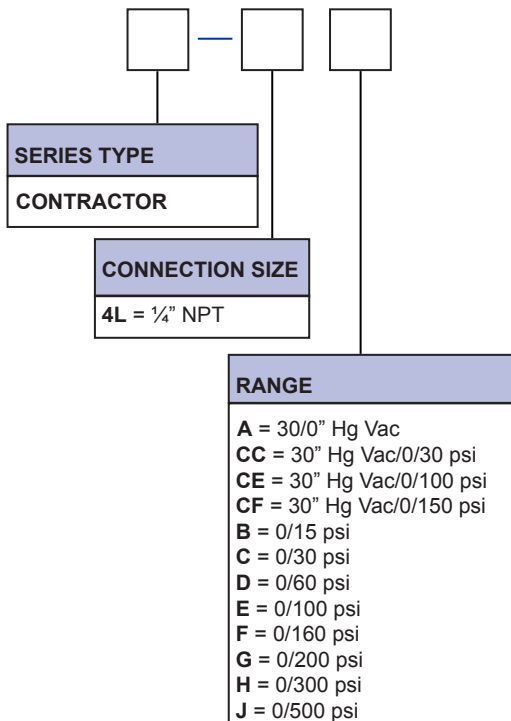


## AVAILABLE OPTIONS\*

- Certificate of Accuracy, NIST Traceable
- Custom Dial
- Special Connection Size
- Cleaned for Oxygen Service (dry only)
- Max/Min Pointer, see page 120

5

## PART NUMBERING SYSTEM



Dial	Unit	A	B	C
4 1/2"	In.	4.9"	1.17"	.97"
	mm	124	30	25

\*Lead times/minimums may apply

## APPROXIMATE SHIPPING WEIGHTS/ BOX QUANTITIES

Dial Size	Est. Unit Wt.	Box Qty
4 1/2"	0.75 lb/(0.36kg)	upon request

## STANDARD DIAL CONFIGURATIONS

Dial Range	Figure Intervals	Graduation Intervals	Dial Range	Figure Intervals	Graduation Intervals
30/0"hg Vac	5" hg	0.5" hg	0/60 psi	10 psi	1 psi
30/0/30 psi	10" hg/5psi	1" hg/1 psi	0/100 psi	10 psi	1 psi
30/0/100 psi	30" hg/10psi	2" hg/1 psi	0/160 psi	20 psi	2 psi
30/0/150 psi	30"hg/25 psi	5" hg/5 psi	0/200 psi	20 psi	2 psi
0/15 psi	2.5 psi	0.25 psi	0/300 psi	50 psi	5 psi
0/30 psi	5 psi	0.5 psi	0/500 psi	50 psi	5 psi

NOTE: Because of continuing improvements, increments and specifications are subject to change. Stock ranges vary by dial size and configuration. Consult PIC Gauges for availability.