



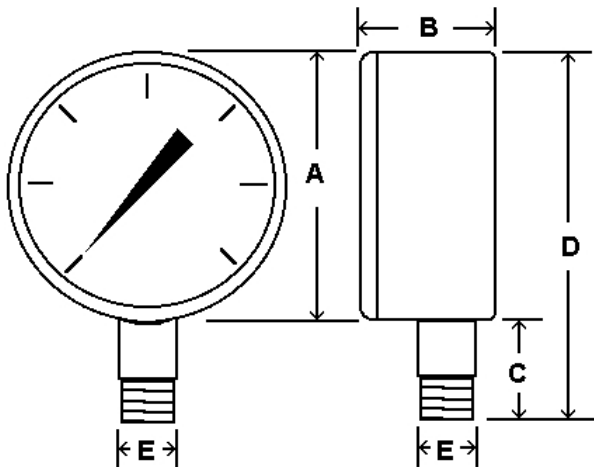
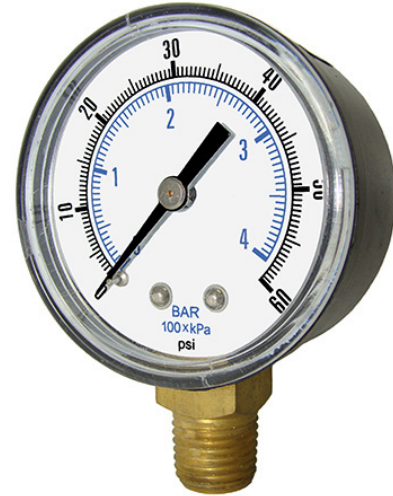
SEP-101D UTILITY GAUGE ABS PLASTIC CASE

1 ABS plastic case utility gauge for commercial and industrial markets Black plastic case, copper alloy internals

SPECIFICATIONS

Dial	2" (50 mm)
Case	ABS plastic, dry non-fillable
Wetted Parts	Copper alloy
Lens	Plastic
Pointer	Black aluminum
Connection	Lower mount
	2" dial = 1/8" or 1/4" NPT
Scale	Standard: psi/BAR (x 100 = kPa)
Accuracy	3-2-3% of span, ASME B40.1 Grade B
Ambient Temp	-40° F to 140° F

Design meets or exceeds ASME B40.100 pressure gauge standard.



Dial	Unit	A	B	C	D	E
2"	In.	2.09"	1.14"	0.83"	2.83"	1/8" or 1/4"
	mm	53	29	21	72	NPT

AVAILABLE OPTIONS*

- Certificate of Accuracy, NIST traceable
- Custom Dial
- Anti-Vibration Movement, see page 107
- Cleaned for Oxygen Service
- Special Connection Size
- Protective Rubber Cover, see page 119
- Max/Min Pointer, see page 120

*Lead times/minimums may apply

APPROXIMATE SHIPPING WEIGHTS/ BOX QUANTITIES

Dial Size	Est. Unit Weight	Box Qty
2"	0.15 lbs (0.08 kg)	100

NOTE: Because of continuing improvements, increments/specifications are subject to change without notice. Stock ranges vary by dial size and configuration. Consult PIC Gauges for availability.