



# UNITED BRASS WORKS, INC.

714 S. Main St. Randleman, N.C. 27317

Tel: 800-334-3035 Fax: 800-498-4696 www.ubw.com



## Model 44NYLL Whistle Valve Quick-Opening Self-Closing Globe Valve With Yoke Less Lever

**CRN OCO7135.2C**

**150WSP • 400 WOG**

**100% Pressure Tested**

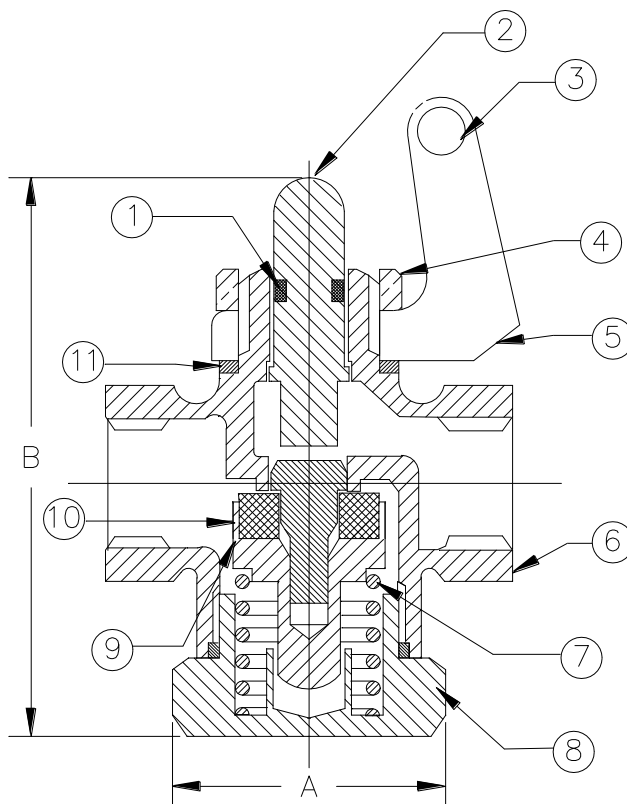
**Threaded Ends**

**PTFE Disc • Integral Seat**

**\*Contains Lead. Not Intended for Use in Potable Water Systems\***

### MATERIAL LIST

NO.	DESCRIPTION	MATERIAL
1	O-Ring	008 TFE/P
2	Stem	Stainless Steel
3	Clevis Pin	Steel
4	Lock Nut	Brass
5	Yoke	Bronze
6	Body	Bronze
7	Spring	Stainless Steel
8	Cap	Brass
9	Disc Holder	Brass
10	Disc	PTFE
11	Washer	Copper



	A	B	Qty. Per Ctn.
44NYLL 1/4"	1.88	2.50	10